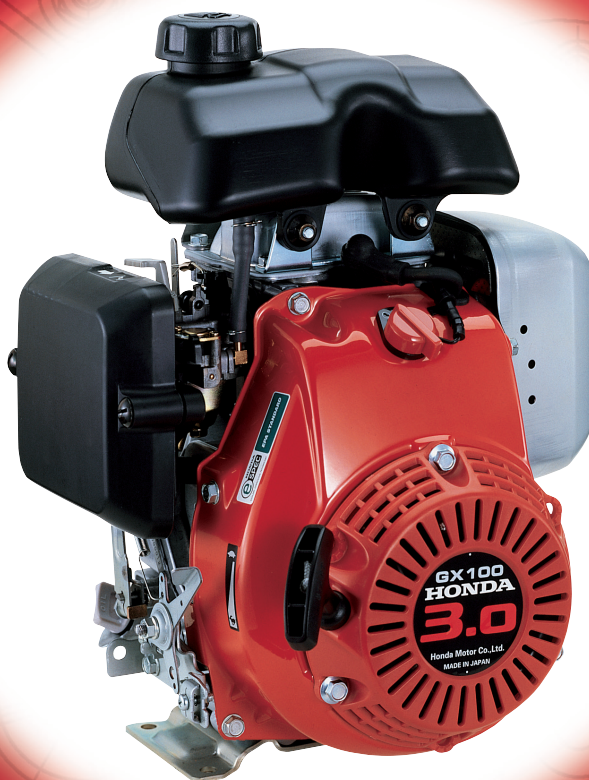


**HONDA**  
ENGINES

# GX 100

Horizontal shaft gasoline (petrol) engine

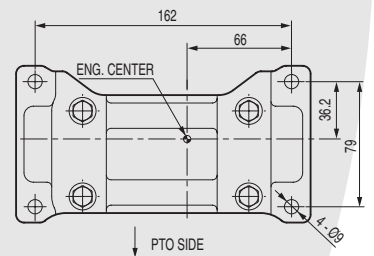
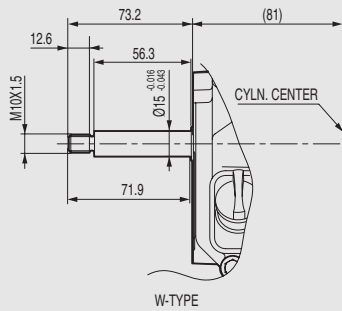
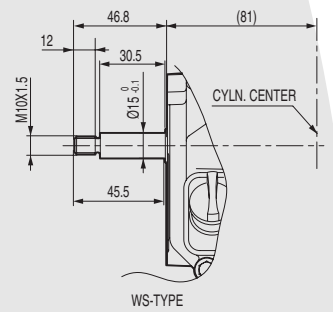
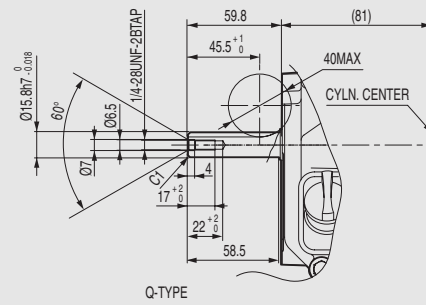
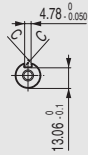
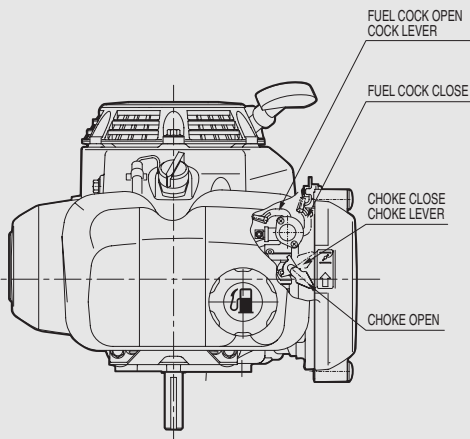
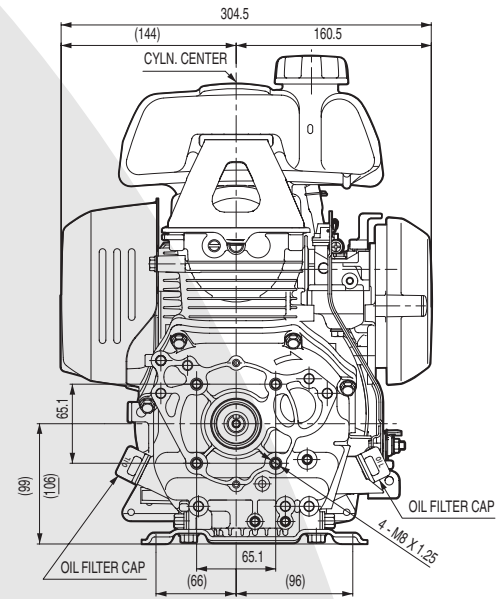
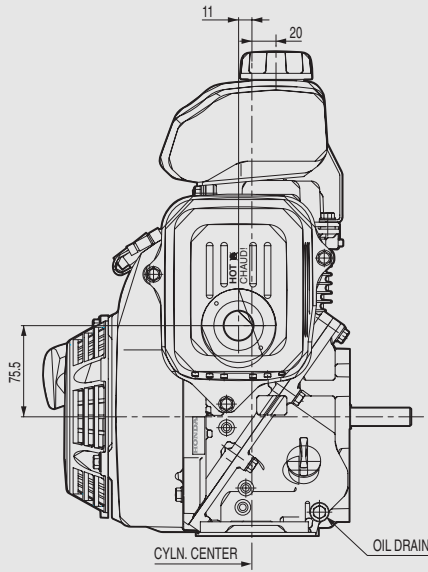
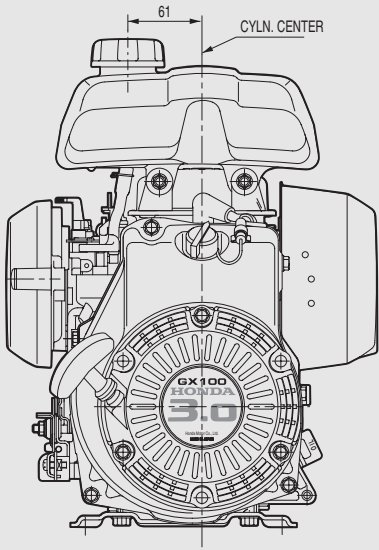
- Moteur à essence à arbre de sortie horizontal
- Benzinmotor mit horizontaler Kurbelwelle
- Motore a benzina ad albero horizontale



2.2 kW (3.0 HP) / 3 600 min<sup>-1</sup>

# Dimensions Unit: mm

## STANDARD TYPE



**POWERED by**  
**Honda Engines**





## Specifications

Model	GX 100
Engine type	Air cooled 4 stroke OHC petrol engine, horizontal shaft
Bore x stroke	56 x 40 mm
Displacement	98 cm <sup>3</sup>
Compression ratio	8.5 : 1
Max. power output	2.2 kW (3.0 HP) / 3 600 rpm
Maximum torque	5.7 Nm / 0.59 kgm / 3 600 rpm
Ignition system	Transistorised
Starting system	Recoil
Fuel tank capacity	1.2 l
Specific fuel cons.	327 g/kW.hr - 240 g/HP.hr
Engine oil capacity	0.4 l
Dimensions (L x W x H)	287 x 304 x 402 mm (S-Type)
Dry weight	10.6 kg

## Spécifications techniques

Modèle	GX 100
Type du moteur	Moteur à essence 4 temps OHC, refroidissement à air, arbre de sortie horizontal
Alésage x course	56 x 40 mm
Cylindrée	98 cm <sup>3</sup>
Taux de compression	8.5 : 1
Puissance maxi	2.2 kW (3 ch) / 3 600 tr/mn
Couple maximal	5.7 Nm / 0.59 kgm / 3 600 tr/mn
Système d'allumage	Transistorisé
Système de démarrage	Lanceur
Cap. du réservoir d'ess.	1.2 l
Cons. d'essence spéc.	327 g/kW.h - 240 g/ch.h
Capacité d'huile moteur	0.4 l
Dimensions (L x l x H)	287 x 304 x 402 mm (Type S)
Poids à sec	10.6 kg

All specifications are subject to change without notice.  
Les caractéristiques techniques peuvent être modifiées à tout moment et sans préavis.

## Spezifikationen

Modell	GX 100
Motortyp	Luftgekühlter 4-Takt OHC Benzinmotor, horizontale Kurbelwelle
Bohrung x Hub	56 x 40 mm
Hubraum	98 cm <sup>3</sup>
Verdichtung	8.5 : 1
Höchstleistung	2.2 kW (3 PS) / 3 600 min <sup>-1</sup>
Max. Drehmoment	5.7 Nm / 0.59 kgm / 3 600 min <sup>-1</sup>
Zündsystem	Elektronische Zündung
Starter	Reversierstarter
Tankinhalt	1.2 l
Spez. Kraftstoffverbrauch	327 g/kWh - 240 g/PSH
Motorölkapazität	0.4 Liter
Maße (L x B x H)	287 x 304 x 402 mm (Typ S)
Trockengewicht	10.6 kg

## Dati tecnici

Tipo	GX 100
Tipo di motore	Motore OHC ad albero orizzontale, ciclo otto, 4 tempi
Corsa x alesaggio	56 x 40 mm
Cilindrata	98 cm <sup>3</sup>
Rapporto di compressione	8.5 : 1
Potenza massima	2.2 kW (3.0 CV) / 3 600 giri/min
Coppia massima	5.7 Nm / 0.59 kgm / 3 600 giri/min
Accensione	A transistor senza contatti
Avviamento	A strappo con autowolvente
Capacità serbatoio	1.2 l
Consumo combustibile	327 g/kWh - 240 g/CVh
Capacità coppa olio	0.4 l
Dimensioni (Lu x La x A)	287 x 304 x 402 mm (Tipo S)
Peso a secco	10.6 kg

Le specifiche sono soggette a cambiamento senza preavviso.  
Die Spezifikationen können ohne Vorankündigung geändert werden.

Ref. EEC - TS 2001/08 - GX 100

hella@iohta.com

**Germany • Honda Engines / Selling agent**  
Honda Logistik Center Deutschland GmbH  
Spredlinger Landstraße 166  
D-63069 Offenbach/Main  
TEL: + 49 (0)6 98 30 95 17  
FAX: + 49 (0)6 98 30 91 28

**United Kingdom • Honda Engines / Selling agent**  
Honda Logistics Centre (UK) Ltd.  
Unit 3210, Wellington Parkway,  
Magna Park Lutterworth,  
Leicestershire LE 17 4JQ United Kingdom  
TEL: + 44 (0)1 45 55 59 429  
FAX: + 44 (0)1 45 55 59 428

**HONDA**  
ENGINES

**Honda Europe NV**  
EUROPEAN ENGINE CENTER  
Langerbruggestraat 104 • B-9000 Gent  
TEL: + 32 (0)9 250 12 11 • FAX: + 32 (0)9 250 14 24

**Italy • Honda Engines / Selling agent**  
Honda Logistic Centre Italy S.P.A.  
Via Strà, 153  
I-37030 Colognola ai Colli (VR)  
TEL: + 39 04 56 17 33 41  
FAX: + 39 04 56 15 12 70

**France • Honda Engines / Product information center**  
Parc d'Activités de Pariest  
Allée du 1er Mai  
Croissy Beaubourg  
F-77313 Marne-La-Vallée Cedex 13  
TEL: + 33 (0)1 60 37 31 18  
FAX: + 33 (0)1 60 37 33 66