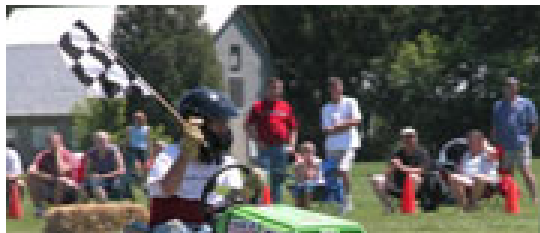


Southwestern Ontario Lawn Tractor
Racing Association
S.O.L.T.R.A.



Racing Rules 2008



Revised: November 23rd, 2007



S.O.L.T.R.A. General Rules

1. Tractors must use all factory manufactured parts (i.e. hood, grille, and chassis). With the exception of rear fenders, this may be fabricated but are at the discretion of the executive.
2. Every driver must have and wear a DOT approved racing helmet, (i.e. snowmobile or motorcycle) with goggles, face shield, or safety glasses. Half helmets are not permitted (must cover ears). Full faced helmets with neck collar are recommended.
3. All drivers must wear long pants, shirts, and closed toe, leather, **over ankle** shoes. (NO shorts, tank tops, or sandals.)
4. a) All tractors **MUST** and **WILL** go through a tech. inspection on at least one of two test and tune dates, and receive an inspection sticker before being allowed to race. If a failure occurs on either of these dates, drivers must make arrangements with their perspective tech. directors to have their tractor re-teched.
b) All shields and guards must be in place as determined by the tech inspector.
5. All drivers are asked to be at the track **2** hours before race time and must be registered at least **1** hour prior to start of race. This allows the officials time to prepare heat race starting positions and allows for some practice laps. **If not registered by said time driver may not race.** (Subject to S.O.L.T.R.A. officials.)
6. All tractors must have a number (black number on white background, or white number on black background, a minimum of 3" high). Must be placed on both top, front corners of hood. A number on rear of tractor is acceptable. Numbers must not exceed two (2) digits.
7. Burnouts and unnecessary speed off track will not be tolerated. The first offense will result in offending driver not being allowed to race for the remainder of that day, and a one full race day suspension which will be served at the next race offending driver attends. The 2nd offense will result in a suspension of two races and the 3rd offense will result in a suspension for remainder of season with a review of racing eligibility at end of suspension.
8. Any driver exhibiting any signs of impairment (either drugs or alcohol), will not be permitted to race. No alcohol will be permitted at the track at any time during race event.
9. S.O.L.T.R.A. will not tolerate misconduct of any kind, on any website by members of S.O.L.T.R.A. which is disrespectful or detrimental to the sport of lawn tractor racing. If a member or members are disrespectful, as deemed by the S.O.L.T.R.A. executive, that member or members will have his/her/their membership(s) revoked for the duration of one year. The reinstatement of the memberships of these individuals will be subject to executive approval after this time.
10. The organizers of any race event can and will remove anyone who is not complying with these rules. Anyone who exhibits reckless, careless, or dangerous driving will also be removed, at the discretion of the S.O.L.T.R.A. executive.
11. All engines, in all classes must be a naturally aspirated, gasoline powered, vertical shaft engines (L-head or over-head (OHV) design), with an onboard starter (either pull type or electric) not to exceed 18 H.P., unless otherwise specified. Centrifugal clutches will not be allowed.
12. Any switches on tractors must not allow the engine to run without the tether cord attached.

S.O.L.T.R.A. Racing Rules

1. Flag colours and what they mean,
 - a) Red - all drivers must stop their tractors immediately and hold their position.
 - b) Yellow - all drivers must slow down and hold their position (no passing).
 - c) Black - this flag is shown when a driver commits an infraction on the race track (rough driving, unnecessary bumping, etc.) A rolled flag, when shown to a driver, means that driver has one (1) lap to correct his/her performance on the track. If that driver does not correct his/her performance, he/she will be shown the full black flag, and must take his/her tractor to the pits immediately.
 - d) Green - signals all drivers to **GO! GO! GO!**
 - e) White - indicates one lap to go.
 - f) Checkered - the race has been won and is over. All drivers must pass by the checkered flag in order to be counted as completing the race.
2. The driver(s) who are a lap (or more) down should stay to the inside of the track at all times, allowing the faster tractors to get around the track. Blocking by lapped tractors will not be tolerated.
3. If a driver goes outside the track area during a race, that driver must re-enter the track only when safe to do so. But is not allowed to advance his/her position by doing this.
4. On the original green flag, a driver is **not** permitted to pass until that driver has crossed the start/finish line. Failure to do this may result in that driver getting the black flag.
5. In the event of a caution, re-start positions will be determined by the track officials. The driver, and all others involved, causing the caution will re-start at the rear of the field. Passing on a re-start is not permitted until the lead tractor has crossed the start/finish line, and only then you are permitted to pass on the outside.
6. "The Rookie Rule" - All rookie drivers, no matter what age or class, will **not** draw for position. These drivers will start at the rear of the field in their respective classes with a yellow stripe across their shoulders and will continue to do so until deemed, by the executive, ready to draw for their position. Also, all rookie drivers will have a yellow stripe taped across the rear of their tractor for one full season.
7. In the event of a tractor break down, driver must remain on the tractor until yellow caution flag is shown, at which time the tractor must be removed from the track. Repairs must be made in the pits after which tractor may return to the track. (No repairs to be made in centre of race track.)
8. If an engine is suspected to be illegal, an inspection of that engine may be done, including a tear down. If a tear down is required, it will be done by an unbiased third party with the owner/driver of the suspect tractor and at least one S.O.L.T.R.A. director present. If the suspect engine is found to be legal, it will be reassembled at the expense of the association. However, if the suspect engine is found to be illegal, it will be the responsibility of the owner/driver to reassemble that engine. A tear down will take place, if concerns are brought forward at no less than three consecutive races about the same tractor by no less than two different members.
9. All technical complaints must be taken to the executive for consideration after the completion of all racing. If a competitor complains about a winning tractor the 1st, 2nd and 3rd place tractors will be inspected.
10. **All NEW super-modified** drivers must have completed at least one full season (min. 12 races) driving in the modified class before competing in the super modified class will be permitted.
11. If any driver is caught without having their safety equipment (tether cord, helmet, boots, etc...), attached or done up correctly, will be suspended for that race. A second offence will result in suspension for one complete race day.

S.O.L.T.R.A. Race Day Protocol

- All drivers must arrive a minimum of 2 (two) hours before the posted race time, unless previous arrangements have been made.
- All members must show membership card at all venues. Failure to do so may result in having to pay to enter.
- One membership card allows 2 people entrance to venue.
- All drivers must register before unloading their tractors.
- Any tractor in need of a re-tech. inspection has until one hour before the posted race time to do so.
- Any tractor either being speed or R.P.M. tested must be done on the dyno with the driver seated on the tractor.
- All drivers racing the stock and/or superstock classes must take their tractors to a specified quarantine area to have their tractors re-teched immediately following their respective feature races. Failure to do so will result in disqualification.
- Each member will be allowed one guest in the pits.
- Each member will be responsible for their guest.
- Each guest must sign a waiver, at which time they will be given a guest membership card that must be worn at all times.
- There will be a "ZERO TOLLERANCE" to alcohol consumption before or during a race. This includes all members and their guests.
- Anyone (members or guests) found consuming, or suspected of consuming alcohol before or during a race will be removed from the pit area.
- Any member or guest found consuming alcohol before or during a race will have their membership revoked without refund, and will be banned from racing for a period of one year from the date of the offence.
- Registration will end one hour before posted race time.
- Drivers meeting will be called immediately following the closing of registration.
- All drivers and track workers will attend drivers meeting.
- Any driver that does not attend the drivers meeting for any reason, will be put to the last place starting position of his/her heat, Exceptions may be allowed at the discretion of the executive.
- If time allows, there may be hot laps after the drivers meeting. No driver will be allowed on any track without prior permission from an executive member.
- In the event of a "difference of opinion" occurring on or off the track, members must not confront other members.
- Any "difference of opinion" must be brought to the attention of the members of the executive at

the registration table, only after all racing is completed. At which time the executive members will work together to reconcile the "difference of opinion".

- In the event of a driver experiencing problems with his/her tractor, or sees a problem with the track or another tractor, that driver must raise his/her hand so that a caution can be called.
- If one or more track officials, or driver(s) feel that the track conditions have become unsafe, there will be a conference between track officials and drivers and a decision will be made whether or not to resume racing.
- All decisions made by the executive will be FINAL!

S.O.L.T.R.A. Tractor Classifications

Stock: (for drivers ten years old and up)

Modifications not listed below are not permitted. All tractors must look like lawn tractors, and must start and finish each race with all sheet metal intact (hoods, fenders, and grilles), with the exception of rear engine models.

1. Tractors must be a **stock lawn tractor**, (no garden tractors) with a rim size of maximum 8" on the rear and 6" on the front.
2. Either, blades, belts or mower decks must be removed so that accidental engagement of blades does not occur.
3. Tractor must be as it originally came from the factory. No modifications, of any nature, are allowed to the engine including governors and carburetor. Drive line (trans-axle must be unlocked, belts or pulleys) or the chassis, with the exception of the addition of running boards. All tractors **must** have running boards (foot pegs are not allowed).
4. After market air filters may be used if stock filters cannot be fitted.
5. Brakes must be intact and working (cannot drill cooling holes in brake disc).
6. All stock tractors will have a maximum top speed of **9.9 Kms/Hr.**
7. Horizontal shaft engines will be permitted.
8. Tether cords are not mandatory, but if used must conform to the rules as outlined in all other classes.

S.O.L.T.R.A. Tractor Classifications

Super-Stock: (for drivers 12 years old and up)

Modifications not listed below are not permitted. All tractors must look like lawn tractors, and must start and finish each race with all sheet metal intact (hoods, fenders, and grilles), with the exception of rear engine models.

1. Tractors must be a **stock lawn tractor**, (no garden tractors) with a rim size of maximum 8" and a min of 6", front or rear.
2. Either, blades, belts or mower decks must be removed so that accidental engagement of blades does not occur.
3. No engine modifications will be allowed. Maximum road speed of **20 Kms/Hr**. Mufflers are optional. If removed, exhaust must be routed under and to the outside of tractor chassis, directed horizontally.
4. Drive pulleys can be changed.
5. Chassis must remain stock (discrete strengthening allowed). Front and rear axles/trans-axles must remain in stock location. Chopping of body or axle mounts, for lowering purposes, will not be permitted. May be lowered by changing tire sizes only.
6. Axle width with tires, front and rear, cannot exceed 36". Wheels to be held on to axles with center-drilled axle with locking bolts, oversized cotter pins and washers, lock nuts or castellated nuts with cotter pins.
7. Steering linkage may be discretely reinforced, or replaced with other lawn tractor steering components.
8. Front axle must be a one piece beam, solid mount or center pivoted, and may be dampened, but no shocks or springs.
9. Front spindles must be of original "J" or "L" design.
10. Tires must be turf tires only with a maximum size of 20" on rear.
11. Foot or trigger-type throttles and tethered kill switches are mandatory.
12. All tractors must have running boards (foot pegs not allowed).
13. Tractor body must be stock looking, with a grab handle mounted on left fender, and/or a hip bar mounted on right side of seat. Side bars are optional, but must conform to the rules as stated in other classes.
14. Brakes must be intact and working (cannot drill cooling holes in brake disc). And when applied, must stop the rear axle.
15. Solid drive (live) axles are not allowed. All trans-axles and transmissions must retain **ALL** gears.
16. All tractors must run on pump fuel only (not to exceed 96 Octane). No alcohol or other additives will be allowed.

S.O.L.T.R.A. Tractor Classifications

Modified: (for drivers 14 years old and up)

Modifications not listed below are not permitted. All tractors must look like lawn tractors, and must start and finish each race with all sheet metal intact (hoods, fenders, and grilles), with the exception of rear engine models.

1. All tractors must have been a **lawn** tractor (no garden tractors). Maximum rim size is 8" for all four wheels. Must have a minimum 15" tire on both rear wheels. Wheels to be held on to axles with center-drilled axle with locking bolts, oversized cotter pins and washers, lock nuts or castellated nuts with cotter pins. **Steel or aluminum go cart type wheels will be allowed.**
2. Brakes must be intact and working (cannot drill cooling holes in brake disc). Any improvement in brakes in this class will make for safer racing. Only one brake assembly will be allowed, and when applied must stop the rear axle.
3. Foot or trigger-type throttles and tethered kill switches are mandatory.
4. Mower decks may be removed. If left intact, it must be solidly in place and must have a minimum ground clearance of 2.5" (from lowest point on deck to ground). Deck must not exceed overall width of tractor, a maximum of 40".
5. Mufflers are optional. If removed, exhaust must be routed under and to the outside of tractor chassis, directed horizontally.
6. Batteries must be securely fastened to tractor chassis. If mounted on the outside of chassis, battery must be fully enclosed and vented. Fuel tanks must be securely fastened to chassis. Bungee cords are not sufficient.
7. **NO** engine modifications will be allowed. All single cylinder flat head design engines to be governed no higher than 4200 rpm. All other engines are to be governed no higher than 3850 rpm.
8. Drive pulleys and/or sprockets may be changed. Centrifugal clutches will not be allowed.
9. Chassis cannot be widened, narrowed, lengthened or shortened by any means, with the exception of adjustable chassis pans, and then chassis must not be more or less than original manufacturers' dimensional length. Discrete holes or slots may be cut into **chassis** to facilitate in the fabrication of the tractor. All tractors must have running boards (foot pegs are not allowed).
10. Both front and rear axles can be widened to 42" (outside of tire to outside of tire) without offset. Transaxles can be locked for posi-traction. Front axle can be fabricated, but must be installed in original location, and must be of one piece design. King pins must be a minimum 1/2", installed with a minimum 5/8" spindle. Rear axles may be of "live axle" design, but must go through a shift able gear box. All trans-axles and transmissions must retain **ALL** gears. To enhance stability and safety of the tractor, it is suggested that both axles be at least 40" wide.
11. Tractors may be lowered by way of;
 - (a) A fabricated front axle.
 - (b) Rear trans-axles, and live axles, if equipped, can have spacers and/or brackets removed, but must be re-mounted, solidly, in original location on chassis, making sure chassis sits on top of mounts.
 - (c) And/or wheel and tire size. Tractor must have a minimum 15" tire on rear.
12. All tractors must run on pump fuel only (not to exceed 96 Octane). No alcohol or other additives will be allowed.

13. All tractors must have turf tires only. Cutting of tires will not be allowed.
14. All tractors may have a grab handle attached to left rear fender, but must have a hip bar mounted on right side of seat. It is suggested that the hip bar be mounted at the drivers belt line (waist height), when driver is seated on tractor.
15. Direct steering will be permitted. Handle bars are not permitted.
16. Rear bumpers are **mandatory** (fronts are optional). Must be made of square or round tubing. A minimum 1 1/4", but not to exceed 2" O.D. or 2" Sq. (all sharp corners/edges to be removed). Bumper must be mounted so as to be aligned with center of wheel. Optional bars may be added above or below this bumper. Bumpers are not to be wider than overall width of axles (outside of tire to outside of tire).
17. A device **must** be in place that will **sufficiently** protect the drivers back from other tractors (i.e. a "hoop" attached to the rear bumper). This will be left to the discretion of the tech inspector. This device should not exceed any higher than the middle of driver's back when seated on tractor.
18. "The Norbert Rule" - **Side bars are mandatory!!** Must have a metal device mounted between front and rear tires, no higher or lower than axle centers (additional bars may be added above or below this bar), sufficient enough to prevent wheel-to-wheel contact of a competitors tractor. Width of side bars are not to exceed the outside edge of the tires, but can be inside the edge by 1 1/2". If side bars are made of rectangular steel all corners must be rounded (**no sharp corners**)
19. Front bumpers, if equipped, must not exceed further than the front face of the tires, nor extend in front of the tread face, **or** must not be further than 2" from the leading edge of hood to leading edge of bumper.

S.O.L.T.R.A. Tractor Classifications

Super Modified: (for drivers 16 years old and up)

Modifications not listed below are not permitted. All tractors must look like lawn tractors, and must start and finish each race with all sheet metal intact (hoods, fenders, and grilles), with the exception of rear engine models.

1. Tractors must have been originally **lawn** tractors (no garden tractors), and must be powered by a lawn tractor engine of flat head design (not to exceed 18 H.P. twin cylinder.)**[Revision - You may use an Over Head Valve (OHV) engine, provided it does NOT exceed 18 H.P. This engine is NOT allowed to be modified in any way (except exhaust)].** Any and all engine modifications (flat heads only), or repairs made, must be made with original (O.E.M.) parts.
2. Foot or trigger type throttles and tethered kill switches are mandatory.
3. Brakes must be intact and working. Brakes can be modified such as go-cart disc or any other braking design system. (IN SHORT, ANY IMPROVEMENT IN BRAKES IN THIS CLASS WILL MAKE FOR SAFER RACING!!!!) Only one brake assembly will be allowed, and when applied, must stop rear axle.
4. All tractors must run on pump fuel only (not to exceed 96 Octane). No alcohol or other additives will be allowed.
5. Mufflers are optional. If removed, exhaust must be routed under and to the outside of tractor chassis, directed horizontally.
6. Batteries must be securely fastened to tractor chassis. If mounted on the outside of chassis, battery must be fully enclosed and vented. Fuel tanks must be securely fastened to chassis. Bungee cords are not sufficient.
7. Cutting of tires will not be allowed. Wheels can be of unequal size such as 8" on the outside & 6" on the inside. Wheels can be no smaller than 6" and no larger than 8". Wheels to be held on to axles with center-drilled axle, with locking bolts, oversized cotter pins and washers, lock nuts, or castellated nuts with cotter pins. All other methods will be subject to executive approval. **Steel or aluminum go-cart type wheels are allowed.** Must use turf tires only (no ATV or go-cart tires.)
8. Front axles may be fabricated or reinforced, but must be mounted in the original location, and must be of one piece design. King pins must be a minimum 5/8", installed with a minimum 3/4" spindle. Axles, front and rear, may be widened (up to 42" outside of tire to outside of tire), and may have offset. Rear axle may be of trans-axle or live axle design, chain or belt driven and consist of aluminum hubs, aluminum wheels, and hollow axle shaft. To enhance stability and safety of the tractor, it is suggested that both axles be at least 40" wide.
9. Chassis cannot be widened, narrowed, lengthened or shortened by any means, with the exception of adjustable chassis pans, and then chassis must not be more or less than original manufacturers' dimensional length. Tubular steel may be added for structural strength. Chassis may be altered only to allow installation of transaxle or live axle. Discrete holes or slots may be cut into **chassis** to facilitate the fabrication of the tractor. All tractors must have running boards (foot pegs are not allowed).
10. **The use of centrifugal clutches will not be allowed.** Chain drive systems will be allowed. All other pulleys/sprockets may be changed.
11. All tractors may have a handle mounted on left rear fender, but **must have** a hip bar mounted on

right side of seat. It is suggested that the hip bar be mounted at the drivers belt line (waist height), when driver is seated on tractor.

12. Rear bumpers are **mandatory** (fronts are optional). Must be made of square or round tubing. A minimum 1 1/4", but not to exceed 2" O.D. or 2" Sq. (all sharp corners/edges to be removed). Bumper must be mounted so as to be aligned with center of wheel. Optional bars may be added above or below this bumper. Bumpers are not to be wider than overall width of axles (outside of tire to outside of tire).
13. "The Norbert Rule" - **Side bars are mandatory!!** Must have a metal device mounted between front and rear tires, no higher or lower than axle centers (additional bars may be added above or below this bar), sufficient enough to prevent wheel-to-wheel contact of a competitors tractor. Width of side bars are not to exceed the outside edge of the tires, but can be inside the edge by 1 1/2". If side bars are made of rectangular steel all corners must be rounded (**no sharp corners**)
14. Front bumpers, if equipped, must not exceed further than the front face of the tires, nor extend in front of the tread face, **or** must not be further than 2" from the leading edge of hood to leading edge of bumper.
15. A device **must** be in place that will sufficiently protect the drivers back from other tractors (i.e. a "hoop" attached to the rear bumper). This will be left to the discretion of the tech inspector. This device should not exceed any higher than the middle of driver's back when seated on tractor.
16. The use of direct steering may be used (and is recommended). If handlebars are used, direct steering must be implemented, and must have come from a motorcycle, snowmobile, or an ATV.
17. An aluminum (billet) flywheel may be used, but only in the single cylinder, flat head design engines up to and including 12 H.P. **All other flywheels must remain in an unaltered, stock condition.** When acquiring a new flywheel, it must be examined for wear or corrosion. DO NOT USE IF THERE ARE ANY SIGNS OF WEAR, FATIGUE OR CORROSION. Scatter shields and magnafluxing of flywheels are optional.



Revised: November 23rd, 2007



The following rules are subject to change without prior notice.